

## Research Article



## Evaluation of Nephro-protective Effect of Sub-fraction of Hexane Fraction of Alcoholic Extract of Root of *Aerva javanica*

Vinit movaliya\*, Maitreyi zaveri

Department of Pharmacognosy, K. B. Institute of Pharmaceutical Education and Research, Kadi Sarva Vishwavidyalaya, Sector-23, Gandhinagar, India.

\*Corresponding author's E-mail: [vinitmovaliya@gmail.com](mailto:vinitmovaliya@gmail.com)

Accepted on: 21-05-2014; Finalized on: 30-06-2014.

### ABSTRACT

*Aerva javanica* belonging to family (Amaranthaceae) roots and flowers are reported to possess medicinal properties against rheumatism and kidney problems. The present work is to evaluate the Nephroprotective effect of *Aerva javanica* by cisplatin induced renal toxicity in adult male albino rats of Sprague Dawley strain. The effect of methanol insoluble sub-fraction of hexane fraction of alcoholic extract was evaluated at 130 mg/kg body weight dose in rats against nephrotoxicity induced by administration of cisplatin through intra peritoneal route. Various serum parameters were studied along with histopathological examination of kidneys in each treatment group. The fractions were compared to the ursolic acid at the dose of 150 mg/kg as a standard drug. Methanol insoluble sub-fraction of hexane fraction of alcoholic extract was found to have significant Nephroprotective activity. The levels of urea, creatinine, albumin and total protein in the serum were normalized after treatment with methanol insoluble sub-fraction of hexane fraction of alcoholic extract at 130 mg/kg body weight dose. The methanol insoluble sub-fraction of hexane fraction of alcoholic extract at the dose of 130 mg/kg shows similar result as compared to the reference standard ursolic acid. The methanol insoluble sub-fraction of hexane fraction of alcoholic extract of root of *A. javanica* possesses marked Nephroprotective activity and thus can have a promising role in the treatment of acute renal injury.

**Keywords:** *Aerva javanica*, Acute renal failure, Cisplatin, Nephroprotective, Ursolic acid.

### INTRODUCTION

The plant *Aerva javanica* belonging to the family Amaranthaceae is a tall and woolly under shrub found plentiful in rainy season in Bhavnagar district of Gujarat state in India. The drug used as Pasanabheda means which breaks the kidney stone.<sup>1</sup> Roots and flowers of *Aerva javanica* are reported to possess medicinal properties against rheumatism and kidney troubles.<sup>2</sup> It consists of kaempferol, sterol, triterpenes, flavanoids,  $\beta$ -sitosterol,  $\alpha$ -amyrin, palmitic acid, stearic acid, linoleic acid, myristic, oleic acid, palmitoleic acid, aervanone, alkaloids, an acylated iso-rhamnetin glycoside, etc.<sup>3-4</sup>

Cisplatin (*cis* - diamminedichloroplatinum or CDDP) is a potent anticancer drug.<sup>5</sup> The clinical use of cisplatin is often complicated by nephrotoxicity.<sup>6</sup> Cisplatin infusion at a dose of 20-mg/ m<sup>2</sup> over 4 hr: causes an increase in the filtration fraction and decreased glomerular filtration rate.<sup>7</sup> Nephrotoxicity is importantly modulated as a result of biotransformation. Tubular dysfunction has also been demonstrated very early after cisplatin administration.<sup>5-6</sup>

There is a continuous search for agent that provide nephroprotection against the renal impairment caused by cisplatin for which allopathy offers no remedial measures. The hexane fraction of alcoholic extract of root of *Aerva javanica* was evaluated for its nephroprotective activity.<sup>8</sup> Hence, present study was an attempt to screen the effect of sub-fraction of hexane fraction of alcoholic extract of root of *Aerva javanica* in renal toxicity and compare with ursolic acid as a reference standard drug.

### MATERIALS AND METHODS

#### Plant material

Fresh roots of *A. javanica* collected from Bhavnagar District, Gujarat, India. The authentication of the plant was established and voucher specimen PH/08/002 deposited in the Department of Pharmacognosy and Phytochemistry, KBIPER, Gandhinagar, Gujarat, India. Taxonomist Dr. A. S. Reddy, department of bioscience, S. P. University, V. V. Nagar, Gujarat, India identified this plant. It was shade dried and reduced into coarse powder.

#### Preparation of sub-fraction

The roots of *Aerva javanica* collected, shade dried. For the preparation of alcoholic extract, the dried plant material extracted by 95% ethanol using soxhlet apparatus. The alcoholic extract root of *Aerva javanica* suspended in distilled water (250 ml) and fractionated successively. Further hexane fraction was, ethyl acetate, n-butanol and residue. After completion of extraction, the solvent removed by evaporation. Further concentrated in vacuo and evaluated for its therapeutic efficacy.

#### Animals

Healthy adult male albino rats of Sprague Dawley strain weighing between 200 – 250g aged 60 - 90 days used for the study. The rats were housed two in a cage, maintained in a temperature regulated and humidity controlled environment. The rats were fed with standard food pellets and water.<sup>9</sup> Study was conducted after obtaining ethical committee clearance from the



Institutional Animal Ethics Committee of K.B.I.P.E.R. with approval no. KBIPER/13/469.

### Drug and Chemicals

Cisplatin injection (Fresenius kabi oncology Ltd., Baddi), ursolic acid (Yucca lab, Mumbai), Urea estimation kit, Creatinine estimation kit, Protein estimation kit and Albumin estimation kit were procured from Lab care diagnostics Ltd., Valsad, Gujarat, India.

### Effect of sub fraction of hexane fraction of alcoholic extract of root of *Aerva javanica* in cisplatin-induced renal damage<sup>10</sup>

Similarly, methanol insoluble sub-fraction of hexane fraction of alcoholic extract of root of *Aerva javanica* was evaluated for their curative effect on cisplatin-induced kidney damage. The dose used was 130 mg/kg body weight for methanol insoluble sub-fraction of hexane fraction of alcoholic extract of *A. javanica*.

**Table 1:** Experimental protocol of treatment of sub fraction of hexane fraction of alcoholic extract of root of *A. javanica* to cisplatin-induced renal toxicity

Group no.	Drug treatment	Route & dose	Duration (in days)	Days of withdrawal of blood & kidney	Purpose
P	Gum acacia (2 %)	5 ml/kg p.o.	1 <sup>st</sup> – 15 <sup>th</sup>	16 <sup>th</sup>	Normal Control
Q	Cisplatin	5 mg/kg i.p.	1 <sup>st</sup>	16 <sup>th</sup>	Renal toxicity control
R	Cisplatin + Methanol insoluble sub-fraction	5 mg/kg i.p. + 130 mg/kg p.o.	1 <sup>st</sup> 6 <sup>th</sup> – 15 <sup>th</sup>	16 <sup>th</sup>	Curative effect
S	Cisplatin + Ursolic acid	5 mg /kg i.p. + 150 mg/kg p.o.	1 <sup>st</sup> 6 <sup>th</sup> – 15 <sup>th</sup>	16 <sup>th</sup>	Curative effect reference standard

**Table 2:** Effect of methanol insoluble sub fraction of hexane fraction of alcoholic extract of root of *Aerva javanica* in cisplatin induced renal damage

Group	% Change in body weight	Serum urea (mg/dL)	Serum creatinine (mg/dL)	Total protein (gm/dL)	Serum Albumin (gm/dL)
P	03.58 ± 1.81	25.59 ± 1.24	0.68 ± 0.76	7.43 ± 0.85	5.14 ± 0.31
Q <sup>a</sup>	-10.29 ± 2.41	39.68 ± 0.89	7.95 ± 0.57	3.79 ± 0.32	3.10 ± 0.57
R <sup>b</sup>	09.18 ± 1.36	24.75 ± 0.78	0.64 ± 0.26	7.41 ± 0.54	5.04. ± 0.62
S <sup>c</sup>	07.75 ± 1.46	23.47 ± 1.36	0.63 ± 0.38	7.18 ± 0.68	4.97 ± 0.75

Values are expressed in the terms of Mean ± S.E.M., P<0.05 (n=6) b and c vs. a

### Assessment of renal function of cisplatin induced toxicity in sub fraction of hexane fraction of alcoholic extract of root of *Aerva javanica*

#### Body weight

The weight (in grams) of the animals noted on the first and last day of treatment and the percentage change in body weight was calculated.

#### Blood Urea

Urea concentration in blood estimated by NED Dye method (colorimetric Fix Time test) using Urea (NED) kit.<sup>11</sup>

#### Serum creatinine

Creatinine level in serum estimated without deproteinization method using creatinine estimation kit.<sup>12</sup>

Group P was administered with equivalent volumes of 2 % gum acacia (5 ml/kg) for 15 days orally.

The extent of renal damage was determined by treating group Q with cisplatin 5-mg/kg-body weight, single dose intraperitoneally.

Group R was treated with methanol insoluble sub-fraction of hexane fraction of alcoholic extract of root of *Aerva javanica* for 10 days orally followed by cisplatin administration.

Group S was treated daily with 150 mg/kg body weight of ursolic acid for from 6<sup>th</sup> day for 10 days after cisplatin administration. Cisplatin was administered 5 mg/kg body weight single dose intraperitoneally.

Blood and kidney were withdrawn on the 16<sup>th</sup> day from all the groups to assess the renal function.

Complete protocol was given in Table 1.

#### Serum total protein

Protein level estimated by colorimetric assay with modified Biuret end point method using protein estimation kit.<sup>13</sup>

#### Serum albumin

Albumin level estimated by BCG method using albumin estimation kit.<sup>14</sup>

#### Histopathological examination

Two animals from each group sacrificed on the day of blood withdrawal and their kidneys were isolated. It washed with saline and preserved in 10 % formaldehyde solution for histopathological studies. The kidney were processed and embedded in paraffin wax. The sections



were stained with Hematoxylin and Eosin and observed under light microscope.<sup>15</sup> Photomicrographs of kidney slides were taken.

### Statistical analysis

Results are given as mean  $\pm$  SEM. Data were analyzed using one-way ANOVA followed by Tukey's test to determine the significant difference in methanol insoluble sub-fraction of hexane fraction of alcoholic extract of root of *A. javanica*. The statistical significance of difference was taken as  $P < 0.05$ .

### In-vivo antioxidant studies

Animals sacrificed by cervical dislocation and kidneys were dissected out. The kidneys perfused with an ice-cold saline. The whole kidney was removed, blot-dried, weighed and a 10 % homogenate was prepared with an ice-cold 1.15 % potassium chloride to make a 10 % homogenate using homogenizer (Yamato LSG LH-21, Japan). The homogenate was centrifuged at 3<sup>o</sup>C for 30 minutes at 10000 rpm and used for the following estimations.<sup>16</sup>

### Tissue protein

1 ml of Liver homogenate was taken and made upto 10 ml with 0.5-M sodium hydroxide. From the above solution, 1 ml was pipetted out. 1 ml of 10 % trichloroacetic acid (TCA) was added and centrifuged for 10 minutes at 4<sup>o</sup>C at 4000 rpm. The supernatant was discarded and the precipitate was dissolved in 1 ml 0.5 N sodium hydroxide in boiling water bath at 50<sup>o</sup>C for 10 minute. Then 4 ml alkaline copper tartarate reagent was added and kept for 10 minute at room temperature. Finally, 0.5 ml Folin's reagent added and absorbance recorded at 540 nm. Blank was performed in the same manner but without homogenate.<sup>17</sup>

### Glutathione (GSH)

Proteins were precipitated by 5 % TCA, centrifuged and the supernatant was collected. 0.5 ml supernatant was mixed with 3 ml 0.2 M sodium phosphate buffer pH 8.0 and 0.5 ml 0.6 mM DTNB (5, 5- di thio bis (2-nitro benzoic acid) and incubated for 10 minutes at room temperature. The absorbance of the samples was recorded against the blank at 412 nm in a UV-Visible spectrophotometer and the GSH concentration was calculated from the standard curve.<sup>18</sup>

### Lipid peroxidation

0.5 ml of 10 % homogenate was pipetted into centrifuging tube. 2.5 ml (TBA-TCA-BHT) reagent was added and shaken well. The mixture was incubated for 5 minutes. The mixture heated at 80 <sup>o</sup>C for 10 min on a boiling water bath and centrifuged the mixture at 2000 rpm for 20 minutes. Absorbance was measured at 532 nm. The difference was used as the TBARS (thiobarbituric acid reactive substance) value.<sup>19</sup>

## RESULTS

The roots of *Aerva javanica* were collected (20 kg) from Bhavnagar District, Gujarat. The voucher specimen (PH/08/002) was deposited in the department of Pharmacognosy and Phytochemistry, KBIPER, Gandhinagar, Gujarat, India. The extractive value of methanol insoluble and methanol soluble sub-fractions of hexane fraction of alcoholic extract found to be 0.42 % w/w and 0.21 % w/w respectively.

### Blood serum examination

Successive fractions of alcoholic extract of root of *Aerva javanica* (hexane, ethyl acetate and n-butanol fractions) were investigated with reference to ursolic acid for its Nephroprotective activity. Ursolic acid and alcoholic extract of root of *A. javanica* showed significant improvement in the % change in body weight, serum urea, serum creatinine, serum total protein and serum albumin levels as compared to cisplatin induced group as mentioned in table 2.

The disease-control group induced with cisplatin (5 mg/kg, i.p.) was showed definite signs of nephrotoxicity on 16<sup>th</sup> day after cisplatin administration, as compared to the normal control group, as evidenced by significant decrease in % change in body weight, total protein and serum albumin level and elevation in serum urea and serum creatinine as shown in table 2.

Hexane fraction of alcoholic extract of root of *A. javanica* and ursolic acid showed significant improvement in the % change in body weight, serum urea, serum creatinine, serum total protein and serum albumin levels as compared to cisplatin induced group as mentioned in table 2.

### Effect of methanol insoluble sub fraction of hexane fraction of alcoholic extract of root of *A. javanica* on percentage (%) change in body weight

Ursolic acid and methanol insoluble sub fraction of hexane fraction of alcoholic extract of root of *A. javanica* showed a significant increase in body weight when compared to cisplatin-induced group of rats. Methanol insoluble sub fraction of hexane fraction of alcoholic extract of root of *A. javanica* were significantly recovered the cisplatin induced decrease in body weight as shown in figure 1. Methanol insoluble sub fraction of hexane fraction of alcoholic extract of root of *A. javanica* showed better result as compared to ursolic acid reference standard.

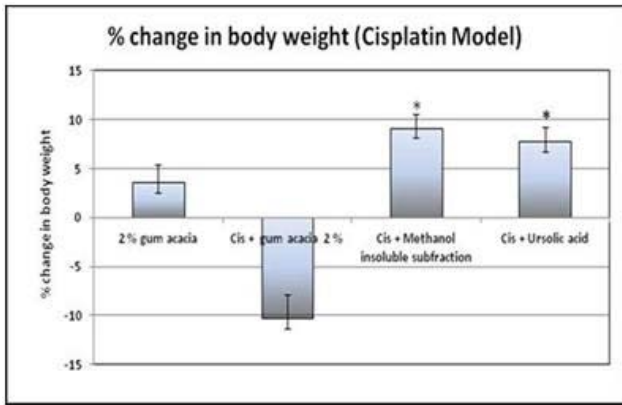
### Effect of methanol insoluble sub fraction of hexane fraction of alcoholic extract of root of *A. javanica* on serum urea level and serum creatinine level

On 16<sup>th</sup> day of study, methanol insoluble sub fraction of hexane fraction of alcoholic extract of root of *A. javanica* at the dose of 130 mg/kg body weight and ursolic acid were significantly recovered the cisplatin induced elevation of serum urea and serum creatinine level as

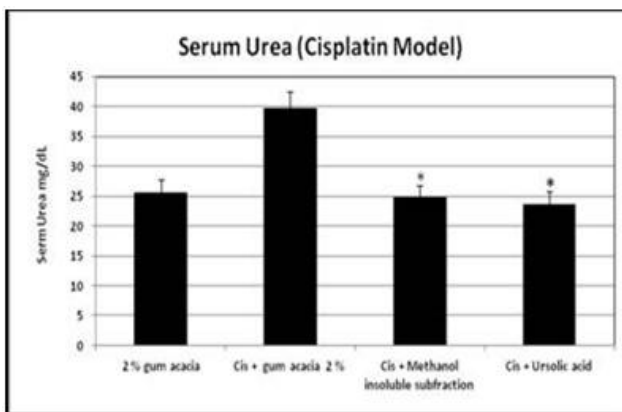


compared to disease control group as shown in figure 2 and figure 3 respectively.

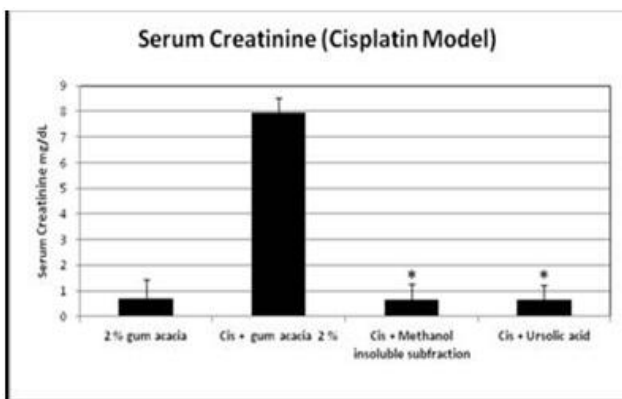
Methanol insoluble sub fraction of hexane fraction of alcoholic extract of root of *A. javanica* showed almost similar result as compared to ursolic acid reference standard.



**Figure 1:** Effect of methanol insoluble sub-fraction of hexane fraction of alcoholic extract of root of *Aerva javanica* on percentage (%) change in body weight in cisplatin induced renal injury



**Figure 2:** Serum urea level

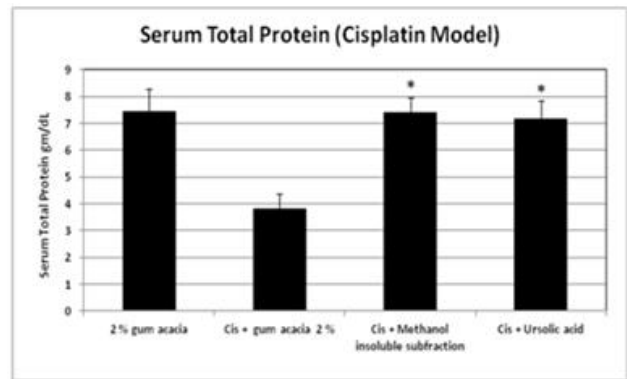


**Figure 3:** Serum creatinine level

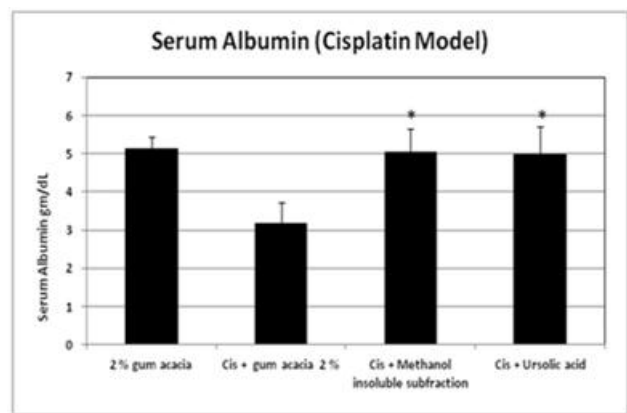
**Effect of methanol insoluble sub fraction of hexane fraction of alcoholic extract of root of *A. javanica* on serum total protein level and serum albumin level**

On 16<sup>th</sup> day of study, methanol insoluble sub fraction of hexane fraction of alcoholic extract of root of *A. javanica*

and ursolic acid were significantly improve the reduced serum total protein level and serum albumin level as compared to disease control group as mentioned in figure 4 and figure 5 respectively.



**Figure 4:** Serum total protein level



**Figure 5:** Serum albumin level

Methanol insoluble sub fraction of hexane fraction of alcoholic extract of root of *A. javanica* and ursolic acid showed significant improvement in selected biochemical variables indicative of oxidative stress in cisplatin induced renal damage as compared to disease control group as mentioned in table 3.

**Table 3:** Effect of methanol insoluble sub fraction of hexane fraction of alcoholic extract of root of *Aerva javanica* in few selected biochemical variables indicative of oxidative stress in cisplatin induced renal damage

Groups	Protein mg/ml	GSH $\mu$ mol/mg Protein	TBARS nM/mg protein
P	178.23 $\pm$ 8.65	10.89 $\pm$ 0.642	141.84 $\pm$ 10.548
Q <sup>a</sup>	091.52 $\pm$ 7.34	07.63 $\pm$ 0.754	397.12 $\pm$ 11.587
R <sup>b</sup>	169.93 $\pm$ 8.74	10.37 $\pm$ 0.965	176.23 $\pm$ 10.342
S <sup>c</sup>	162.35 $\pm$ 7.68	09.46 $\pm$ 0.597	168.80 $\pm$ 9.612

Values are expressed in the terms of Mean  $\pm$  S.E.M., (n=6) P<0.05 b and c vs. a

**Histopathological examination**

**Histopathology of healthy rat kidney**

Histological section of healthy rat kidney showed normal glomeruli and tubules.



### Histopathology of rat kidney of cisplatin induced group

The presence of glomerular congestion, tubular casts, blood vessel congestion, features of acute tubular necrosis, were observed in the histopathological sections of the kidneys in cisplatin-induced groups.

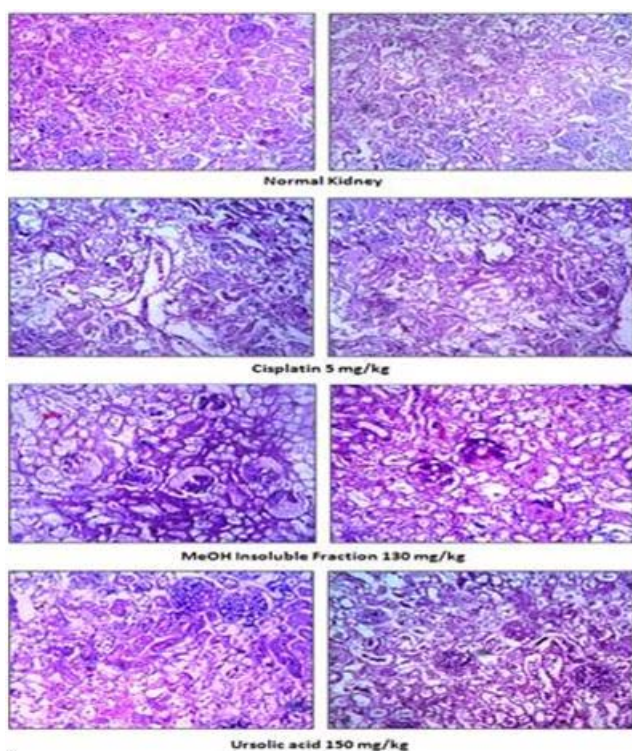
The sections of cisplatin treated rat kidney of disease control group on the 16<sup>th</sup> day were showed marked congestion of the glomeruli with numerous tubular casts associated with epithelial desquamation. Marked peritubular and blood vessel congestion was observed. The interstitium was showed infiltration and congestion. These features suggest that cisplatin induces acute tubular necrosis as shown in figure 6.

### Histopathology of kidney after treatment of methanol insoluble sub-fraction of hexane fraction of alcoholic extract of root of *Aerva javanica* and ursolic acid

Methanol insoluble sub-fraction of hexane fraction of alcoholic extract of root of *Aerva javanica* at dose of 130 mg/kg body weight showed complete normalization of kidney section with few inflammatory cells.

However, mild glomerular as well as peritubular congestion and inflammatory cells were noted in reference standard group of 150 mg/kg body weight of ursolic acid following cisplatin administration as shown in figure 6.

The methanol insoluble sub-fraction of hexane fraction of alcoholic extract of *A. javanica* showed better results as compared to Ursolic acid reference standard in histopathological examinations.



**Figure 6:** Histopathology of rat kidney after the treatment with methanol insoluble sub fraction of hexane fraction of alcoholic extract of root of *A. javanica*

From our study, it was observed that cisplatin induced renal injury was evidenced by the elevated biochemical markers (blood urea, serum creatinine, total protein and serum albumin) and was confirmed by the histopathological features of acute tubular necrosis (Figure 6). The methanol insoluble sub-fraction of hexane fraction of alcoholic extract of root of *Aerva javanica* was showing significant recovery. Based on our histopathological evidence, 130 mg/kg dose of methanol insoluble sub-fraction of hexane fraction of alcoholic extract of root of *Aerva javanica* showed significant recovery of the kidney tissue as shown in figure 6.

### DISCUSSION

The plant *Aerva javanica* belonging to the family Amaranthaceae is used as Pasanabheda means which breaks the kidney stone.<sup>1</sup> Roots are reported to possess medicinal properties against rheumatism and kidney troubles.<sup>2</sup> The Nephroprotective activity of alcoholic extract and aqueous extract of root of *Aerva javanica* were separately reported by Suttee A. *et al.*<sup>20</sup> and Movaliya V. *et al.*<sup>21</sup> respectively. In addition, Isolation of ursolic acid from *Aerva javanica* plant was reported by Khan *et al.*<sup>22</sup> Also, comparison of the alcoholic and aqueous extract of root of *Aerva javanica* for its Nephroprotective activity with reference standard ursolic acid were reported.<sup>23</sup> *In press* The plant *Aerva javanica* was authenticated by macroscopic and microscopic studies as per reported work.<sup>24</sup> Further, evaluation of different fractions of alcoholic extract of root of *A. javanica* for its Nephroprotective activity with reference standard ursolic acid were reported.<sup>7</sup>

### Cisplatin induced renal toxicity study

Relevant perhaps to the nephrotoxicity of cisplatin are the observations that the kidney accumulates and retains platinum largely than other organs. The changes in renal function correlate well with the nephrotoxic effects of cisplatin.<sup>25</sup> Change in creatinine clearance and serum creatinine levels taken as indications of an abnormal glomerular function.<sup>26</sup> Cisplatin caused a marked reduction in the glomerular filtration rate, indicating induction of acute renal failure.<sup>27</sup> Various mechanism proposed for the cisplatin cytotoxicity, Which include direct DNA damage<sup>28</sup>, activation of caspase<sup>29</sup> and mitochondrial dysfunction.<sup>30</sup> The formation of reactive oxygen species(ROS)<sup>31</sup> effects on the endoplasmic reticulum<sup>32</sup> and activation of TNF- $\alpha$ -mediated apoptotic pathways are considered important for cisplatin cytotoxicity. Cisplatin-induced nephrotoxicity is closely associated with an increase in lipid peroxidation in the kidney. There is a large body of evidence on the chemo protective activities of vitamin C, curcumin, selenium, bixin and other dietary components that scavenge free radicals induced by exposure to cisplatin.<sup>33</sup> Cisplatin-induced nephrotoxicity is considered sensitive and significant<sup>34</sup> that showed increase in serum creatinine and urea level and reduced the protein and albumin level on 6<sup>th</sup> day of the study. The disease-control group showed

definite sign of nephrotoxicity, as evidenced by significant decrease in % change in body weight. The reduction in bodyweight may possibly due to the injured renal tubules and the subsequent loss of tubular cells to reabsorb water, leading to dehydration and loss of body weight.<sup>35</sup> The alleviation of cisplatin induced body weight reduction is a reflection of the general palliative effect of methanol insoluble sub-fraction of hexane fraction of alcoholic extract of root of *Aerva javanica* on the nephrotoxicity. The methanol insoluble sub fraction of hexane fraction of alcoholic extract of root of *Aerva javanica* showed almost similar result as compared to ursolic acid as reference standard. Elevation of serum creatinine and serum urea considered as the most important manifestation of severe tubular necrosis of kidney.<sup>36</sup> Cisplatin-induced nephrotoxicity showed decrease serum protein and serum albumin level. Based on results, methanol insoluble sub fraction of hexane fraction of alcoholic extract of root of *A. javanica* showed significant recovery in serum protein level as compared to other fractions and disease-control group. Available evidence suggests that cisplatin exerts its nephrotoxic effects by the generation of reactive free radicals.<sup>37-38</sup> Reasonable cellular-protective agents against cisplatin toxicity may have at least some antioxidant properties to prevent GSH depletion and/or scavenge the intracellular ROS. Hence, antioxidants and free radical scavengers of natural and synthetic origin might provide nephroprotection in cisplatin-induced renal injury.<sup>39</sup> Treatment with methanol insoluble sub fraction of hexane fraction of alcoholic extract of *Aerva javanica* root decrease the TBARS and increase the antioxidant enzymes levels of GSH and tissue protein as compared to the cisplatin treated group, which indicate its nephroprotective activity. Hence, the significant effect is mainly due to the ability of the methanol insoluble sub fraction of hexane fraction of alcoholic extract of root of *Aerva javanica* to restore renal antioxidant defence system.

To conclude, the methanol insoluble sub fraction of hexane fraction of alcoholic extract of root of *Aerva javanica* at dose of 130 mg/kg body weight showed complete normalization of kidney section with few inflammatory cells.

Methanol insoluble sub fraction of hexane fraction of alcoholic extract of root of *A. javanica* possesses marked Nephroprotective activity and thus can have a promising role in the treatment of acute renal injury induced by cisplatin. Further isolation of active components and its Nephroprotective activity in chronic renal failure model need to be evaluate.

**Acknowledgement:** The authors are thankful to AICTE for financial assistance providing research promotion scheme.

## REFERENCES

- Vaidya B, Some Controversial Drugs in Indian Medicine, 1st Ed, Chaukhamba Orientalia, 1982, 3-8.
- Gupta RK, Gaur YD, Malhotra SP, Dutt BK, Medicinal plants of the Indian arid zone, Journal of Agriculture Tropical & Botanical Application, 13, 1966, 247-288.
- Garg SP, Bhushan R, Kapoor RC, Chrysin-7-O-galactoside: a new flavanoids from *Aerva persica* burm.f, Indian Journal of Chemistry, Section-B, 17 B(4), 1979, 416-417.
- Saleh NA, Mansour R, Markham KR, An acylated isorhamnetin glycoside from *Aerva javanica*, Phytochemistry, 29(4), 1990, 1344-1345.
- Lippman AJ, Helson C, Krakoff IH, Clinical trials of Cis diammine dichloroplatinum II, Cancer Chemotherapy Reports, 57, 1973, 191-200.
- Dentino M, Luft FC, Yum MN, Long-term effect of Cis-Diamminedichloride Platinum (CDDP) on renal function and structure in man, Cancer, 41, 1978, 1257-1281.
- Offerman JJ, Acute effects of Cis-diammine dichloroplatinum (CDDP) on renal function, Cancer Chemotherapy and Pharmacology, 12, 1984, 36-38.
- Movaliya V, Zaveri M, Evaluation of nephro-protective effect of different fractions of alcoholic extract of root of *Aerva javanica*, International Journal of Pharmaceutical Sciences Review and Research, 25(2), 2014, 280-286.
- Ghosh MN, Fundamentals of Experimental Pharmacology, Scientific Book Agency, Calcutta, 1984, 153.
- Greggi ALM, Darin JD, Bianchi MD, Protective effects of Vitamin C against cisplatin induced nephrotoxicity and lipid per oxidation in adult rats: a dose dependent study, Pharmaceutical Research, 41, 2000, 405-411.
- Lequang NT, Miguere G, Roche D, Pelladeau ML, Labrousse F, Improved dye procedure for determining urea concentration by using o-phthalaldehyde and naphthylethyl enediamine, Clinical Chemistry, 33(1), 1987, 192.
- Kaplan A, Szabo LL, Opheim KE, The kidney tests of renal function, Clinical chemistry: interpretation and techniques, 2<sup>nd</sup> Ed, Philadelphia, 1983, 109-142.
- Gornall AG, Bardawill CJ, David MM, Determination of serum proteins by means of the biuret reaction, Journal of Biological Chemistry, 177(2), 1949, 751-766.
- Westgard JO, Poquette MA, Determination of serum albumin with the "SMA 12-60" by a bromocresol green dye-binding method, Clinical Chemistry, 18(7), 1973, 647-653.
- Shirwaikar A, Malini S, Kumari SC, Protective effect of *Pongamia pinnata* flowers against cisplatin and Gentamycin induced nephrotoxicity in rats, Indian Journal Experimental Biology, 2003, 41(1), 58-62.
- Uchiyama M, Mihara M, Determination of malonaldehyde precursor in tissues by thiobarbituric acid test, Analytical Biochemistry, 86(1), 1978, 271-278.
- Lowry OH, Protein measurement with the Folin phenol reagent, Journal of Biological Chemistry, 193(1), 1951, 265-275.



18. Carlberg I, Mannervik B, Glutathione reductase, *Methods in Enzymology*, 113, 1984, 484-490.
19. Konings AWT, Drijver EB, Radiation effects on membranes: I. Vitamin E deficiency and lipid peroxidation, *Radical Research*, 80(3), 1979, 494-501.
20. Kumar V, Kaur P, Sutte A, possible role of alcoholic extract of root of *Aerva javanica* in cisplatin and Gentamycin-induced nephrotoxicity in rats, *Indian Journal of Pharmacology*, 40, 2008, 167.
21. Movaliya V, Khamar D, Setty M, Nephroprotective activity of aqueous extracts of *Aerva javanica* roots in cisplatin induced renal toxicity in rats, *Pharmacology Online*, 1, 2011, 68-74.
22. Khan AW, Jan S, Praveen S, Khan RA, Saeed A, Tanveer AJ, Shad AA, Phytochemical analysis and enzyme inhibition assay of *Aerva javanica* for ulcer, *Chemical Central Journal*, 6(76), 2012, 1-6.
23. Movaliya V, Zaveri M, Comparison of alcoholic and aqueous extract of root of *Aerva javanica* for its nephro-protective effect in cisplatin-induced renal toxicity, *International Journal of Pharmaceutical sciences and research*, 5(8), August 2014 (In press).
24. Zaveri M, Movaliya V, Pharmacognostical studies on roots of *Aerva javanica*, *International Journal of Pharmaceutical Sciences Review and Research*, 16(1), 2012, 34-37.
25. Hepple B, The ethics of research involving animals, *Nuffield Council on Bioethics*, 2005, 159.
26. Donadio C, Lucchesi A, Tramonti G, Bianchi C, Creatinine clearance predicted from body cell mass is a good indicator of renal function, *Kidney International*, 63 (Supplement), 1997, S166-S168.
27. Jeong JC, Hwang WM, Yoon CH, Kim YK, *Salviae radix* extract prevents cisplatin-induced acute renal failure in rabbits, *Nephron*, 88(3), 2001, 241-246.
28. Leibbrandt ME, Wolfgang GH, Metz AL, Ozobia AA, Haskins JR, Critical subcellular targets of cisplatin and related platinum analogs in rat renal proximal tubule cells, *Kidney International*, 48(3), 1995, 761-770.
29. Kaushal GP, Kaushal V, Hong X, Shah SV, Role and regulation of activation of caspases in cisplatin-induced injury to renal tubular epithelial cells, *Kidney International*, 60(5), 2001, 1726-1736.
30. Sugiyama S, Hayakawa M, Kato T, Hanaki Y, Shimizu, Ozawa T, Adverse effects of anti-tumor drug, cisplatin, on rat kidney mitochondria: disturbances in glutathione peroxidase activity, *Biochemical and Biophysical Research Communications*, 159(3), 1989, 1121-1127.
31. Matsushima H, Yonemura K, Ohishi K, Hishida A, The role of oxygen free radicals in cisplatin-induced acute renal failure in rats, *Journal of Laboratory and Clinical*, 131(6), 1998, 518-526.
32. Liu H, Baliga R, Endoplasmic reticulum stress-associated caspase 12 mediates cisplatin-induced LLC-PK1 cell apoptosis, *Journal of the American Society of Nephrology*, 16(7), 2005, 1985-1992.
33. Mathew JE, Joseph A, Srinivasan K, Dinakaran SV, Mantri A, Movaliya V, Effect of ethanol extract of *Sphaeranthus indicus* on cisplatin-induced nephrotoxicity in rats, *Natural Product Research*, 26(10), 2012, 933-938.
34. Heidemann HT, Muller S, Mertins L, Stepan G, Hoffmann K, Ohnhaus EE, Effect of aminophylline on cisplatin nephrotoxicity in the rat, *British Journal of Pharmacology*, 97(2), 1989, 313-318.
35. Ali B, Al-Moundhri M, Eldin MT, Nemmar A, Al-Siyabi S, Annamalai K, Amelioration of cisplatin-induced nephrotoxicity in rats by tetramethylpyrazine, a major constituent of the Chinese herb *Ligusticum wallichii*, *Experimental Biology and Medicine*, 233(7), 2008, 891-896.
36. Gilman GA, Rail TW, Nies AS, Taylor P, *The pharmacological basis of therapeutics*, Singapore: McGraw-Hill, Vol II, 1992, 1106-1109.
37. Safirstein R, Miller P, Guttenplan J, Uptake and metabolism of cisplatin by rat kidney, *Kidney International*, 25(5), 1984, 753-758.
38. Uslu R, Bonavida B, Involvement of the mitochondrion respiratory chain in the synergy achieved by treatment of human ovarian carcinoma cell lines with both tumor necrosis factor- $\alpha$  and cis-diammine dichloroplatinum, *Cancer*, 77(4), 1996, 725-732.
39. Maliakel DM, KagiyaTV, Nair CKK, Prevention of cisplatin-induced nephrotoxicity by glucosides of ascorbic acid and  $\alpha$ -tocopherol, *Experimental and Toxicologic Pathology*, 60(6), 2008, 521-527.

Source of Support: Nil, Conflict of Interest: None.

